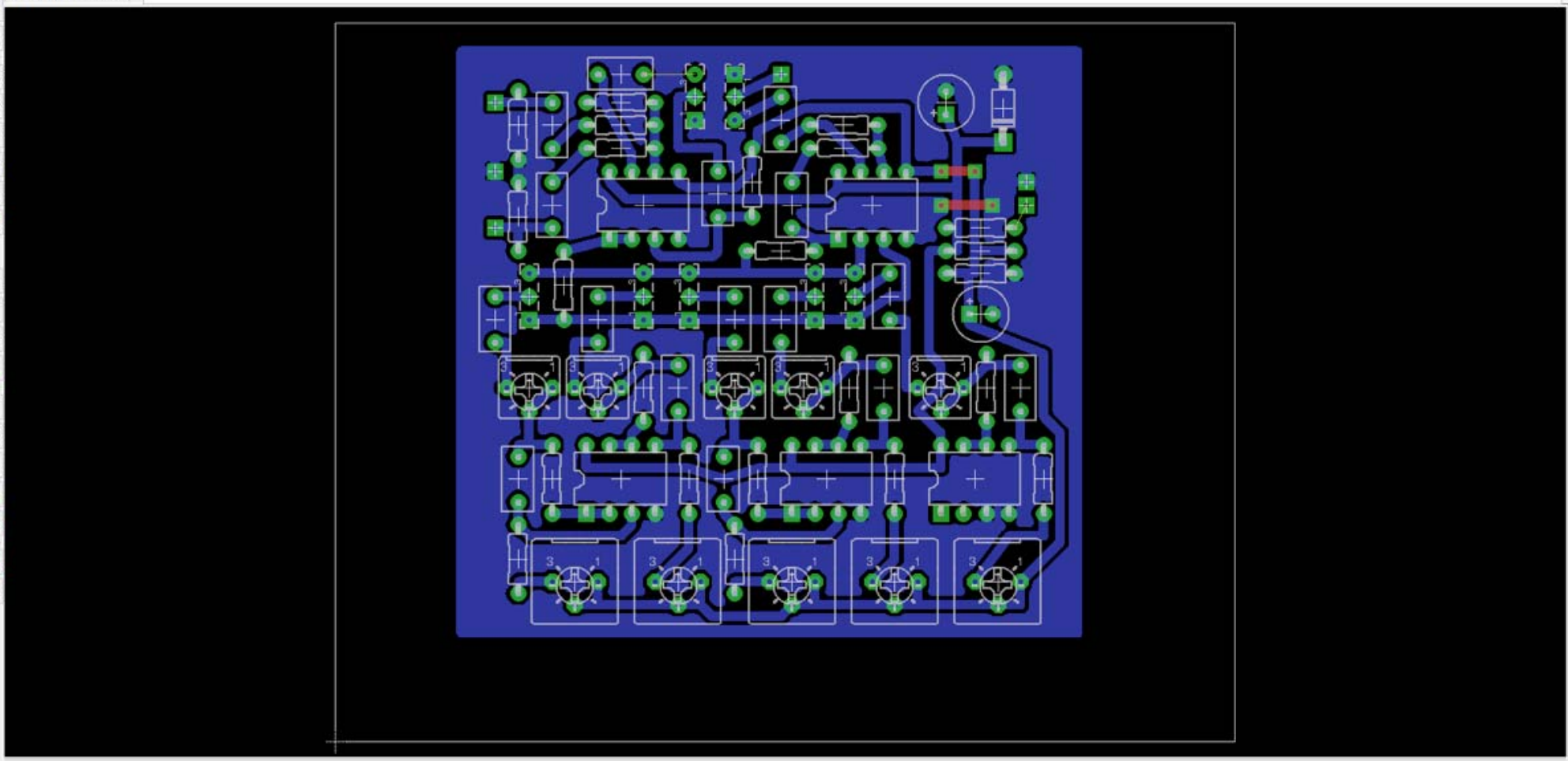
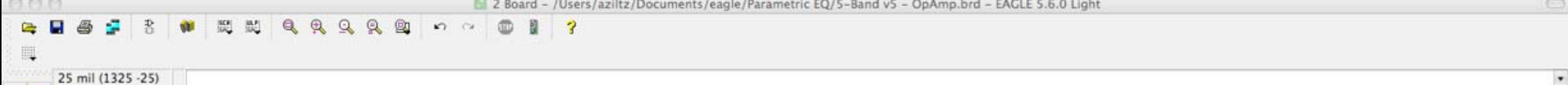
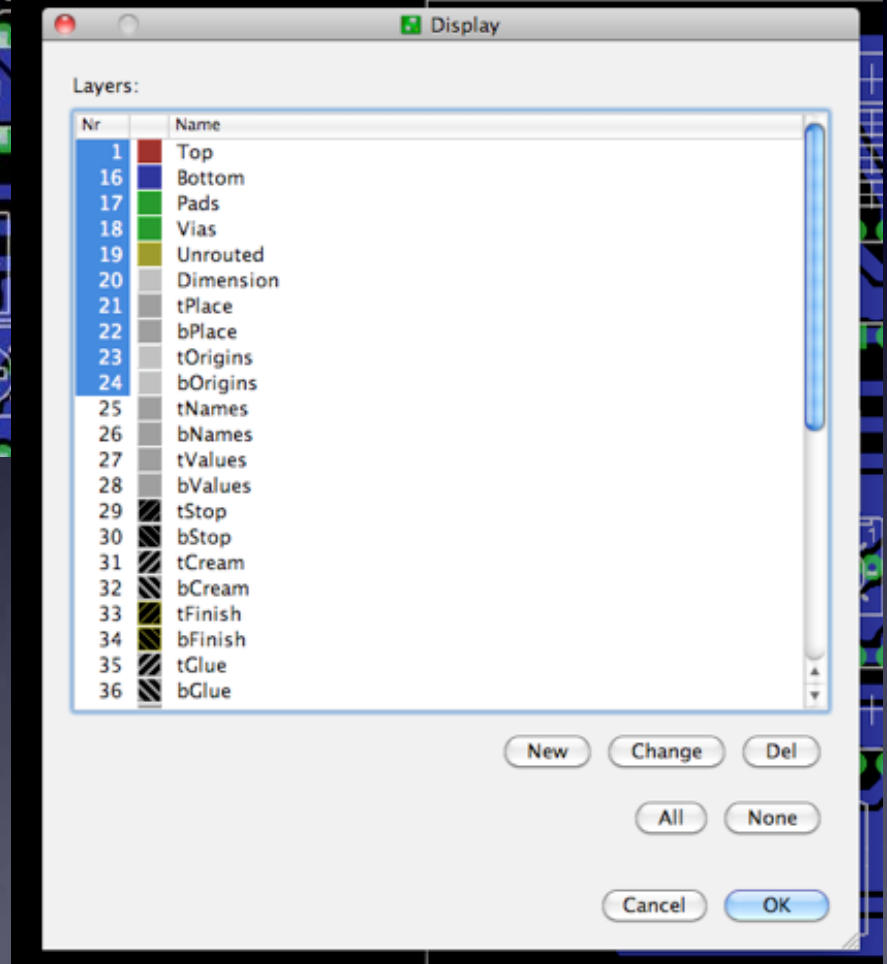
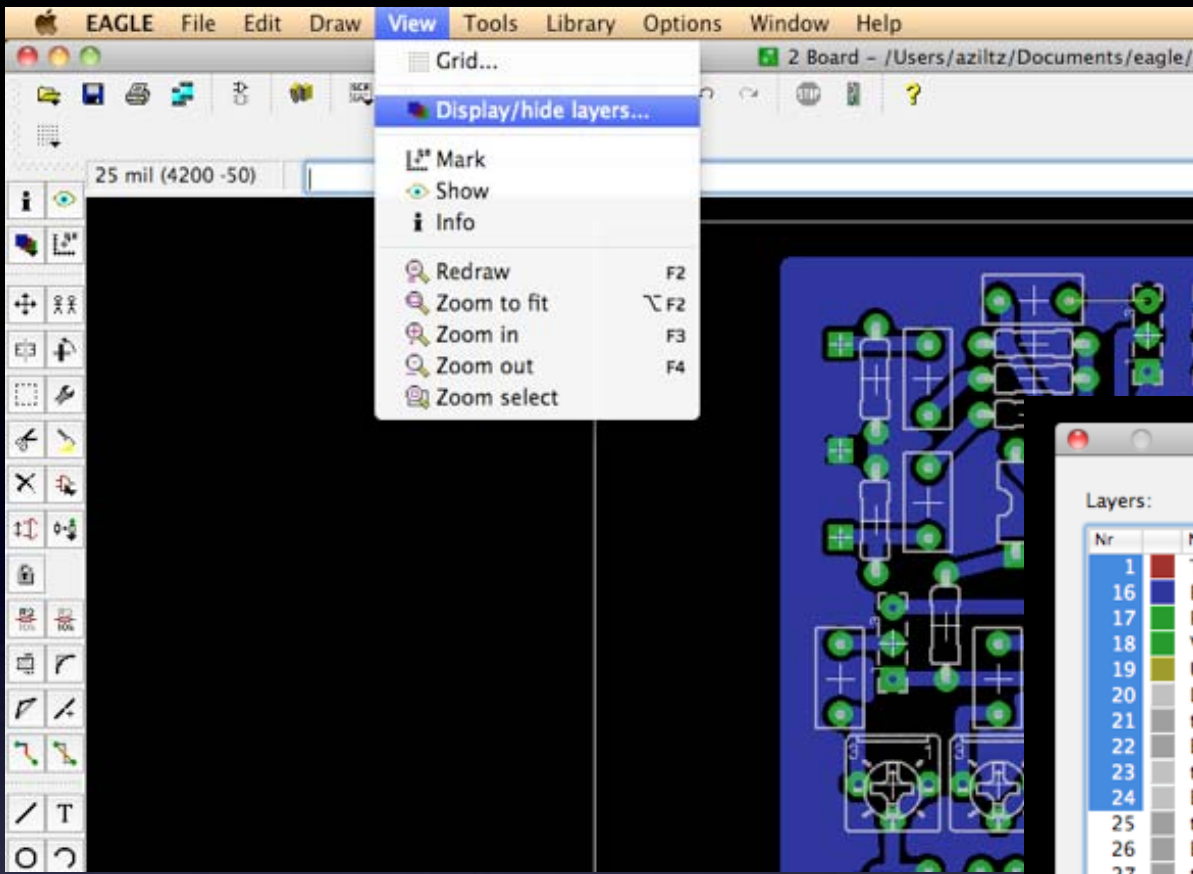


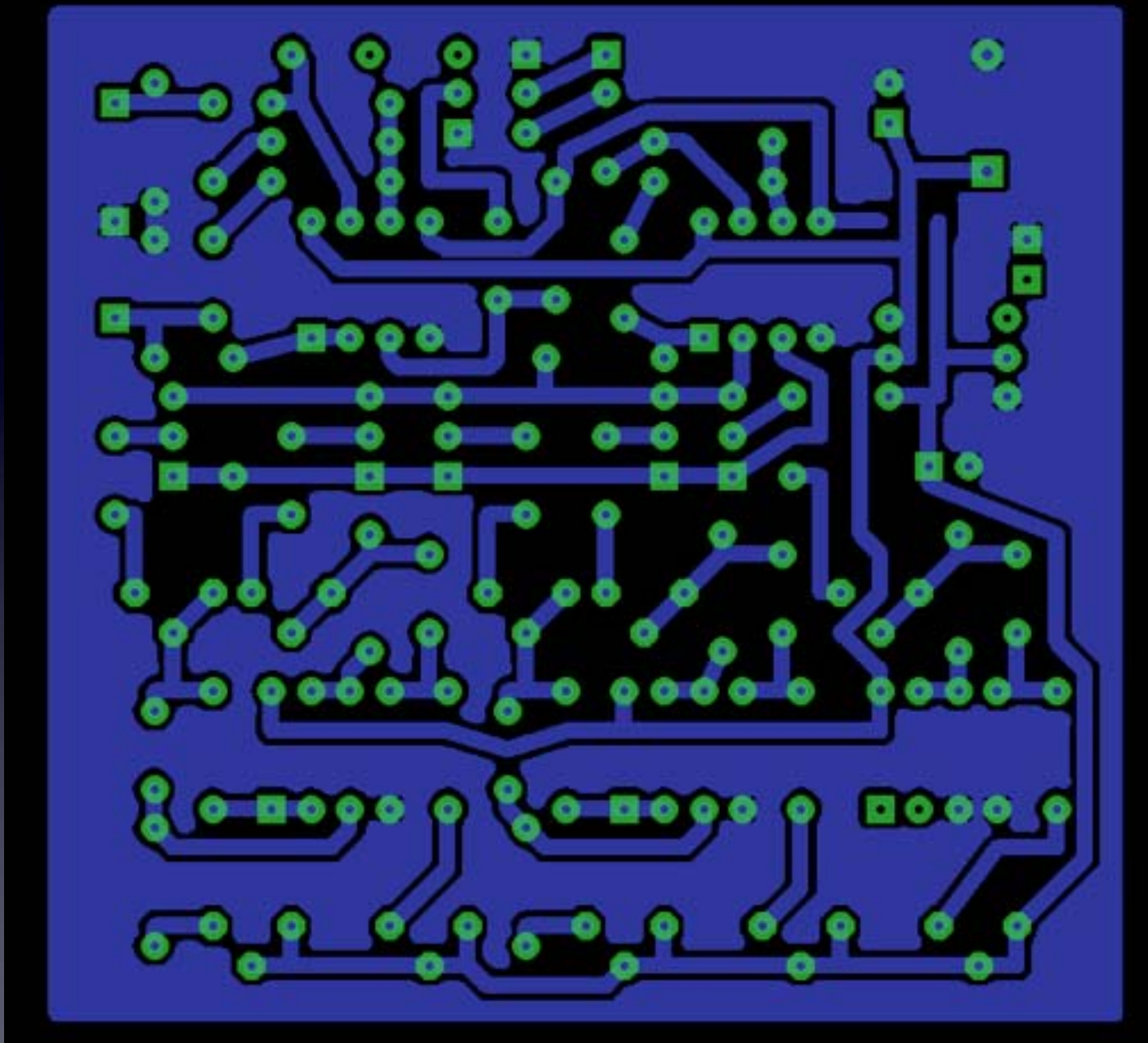
Printed Circuit Boards

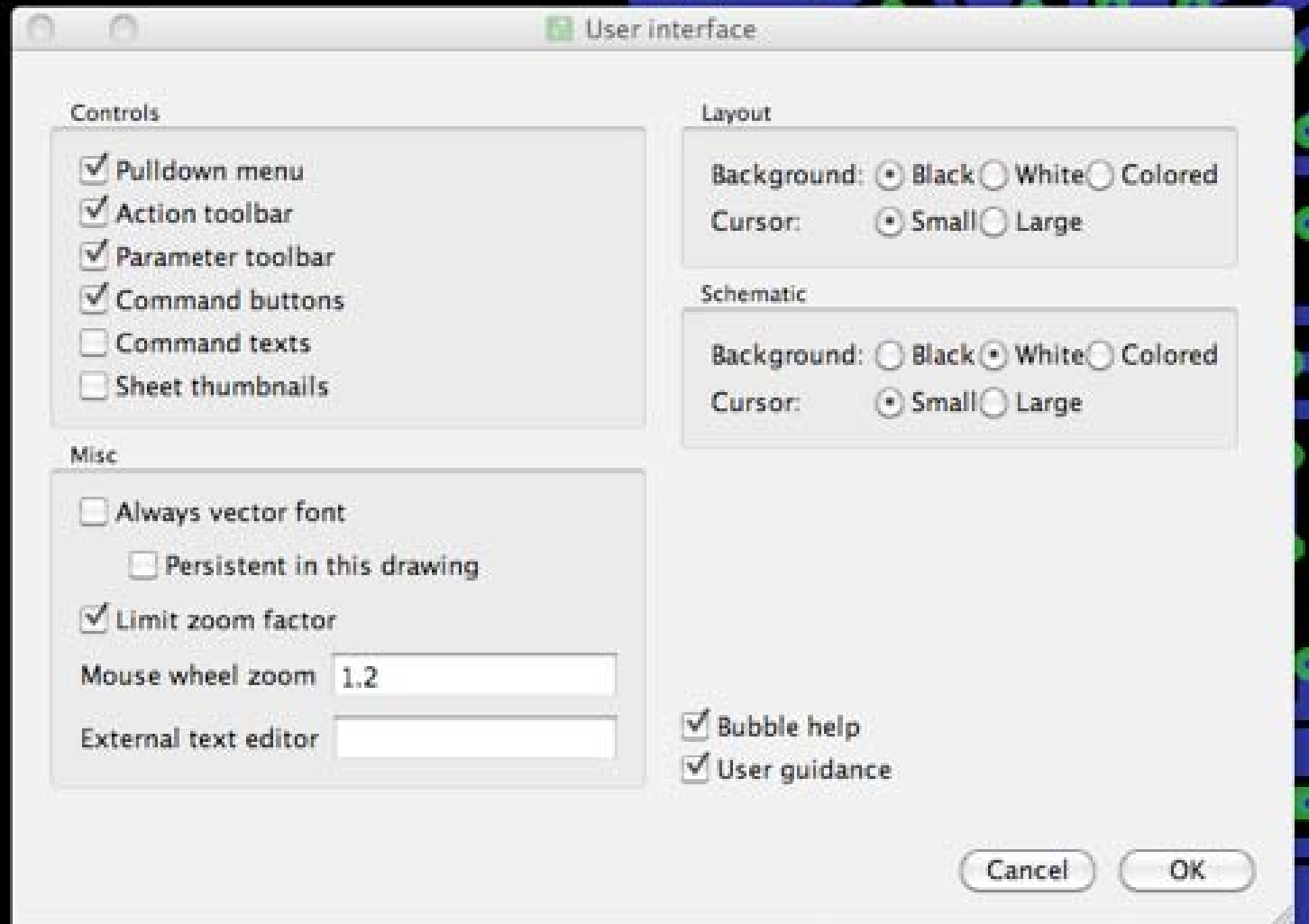
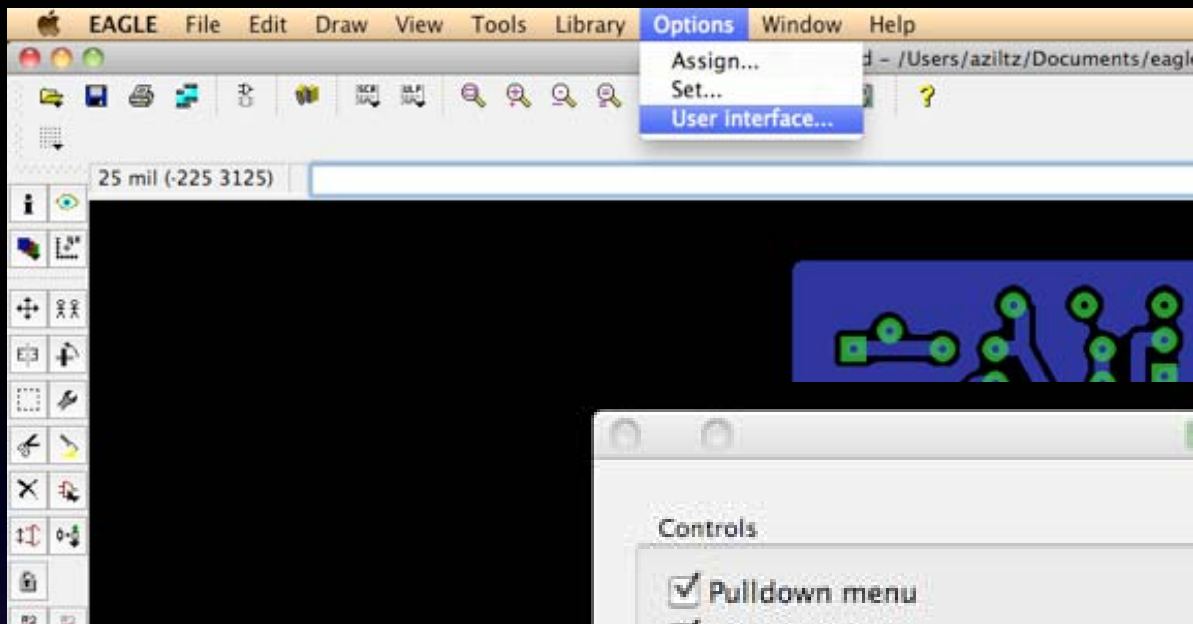
A Tutorial

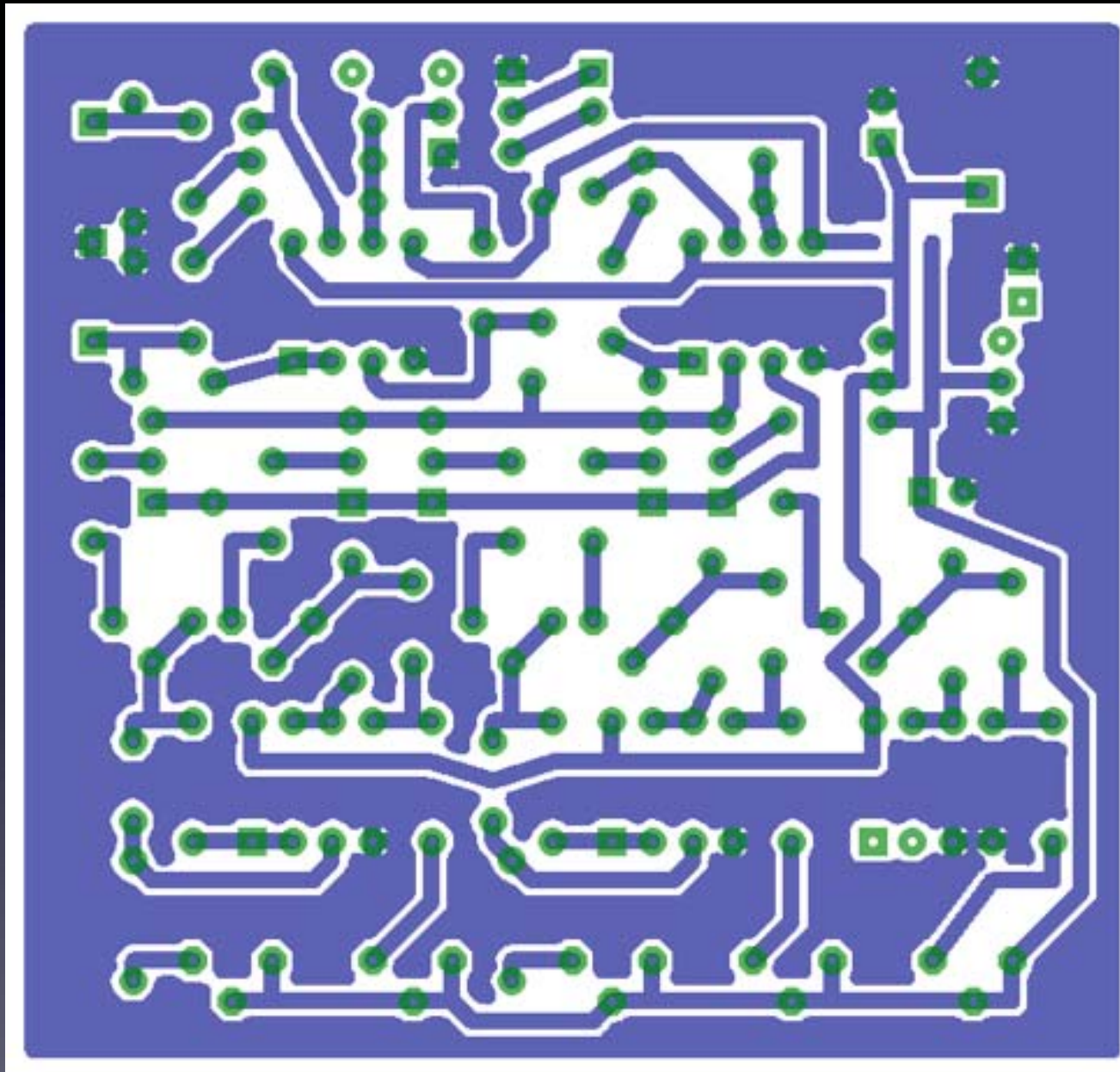
25 mil (1325 -25)

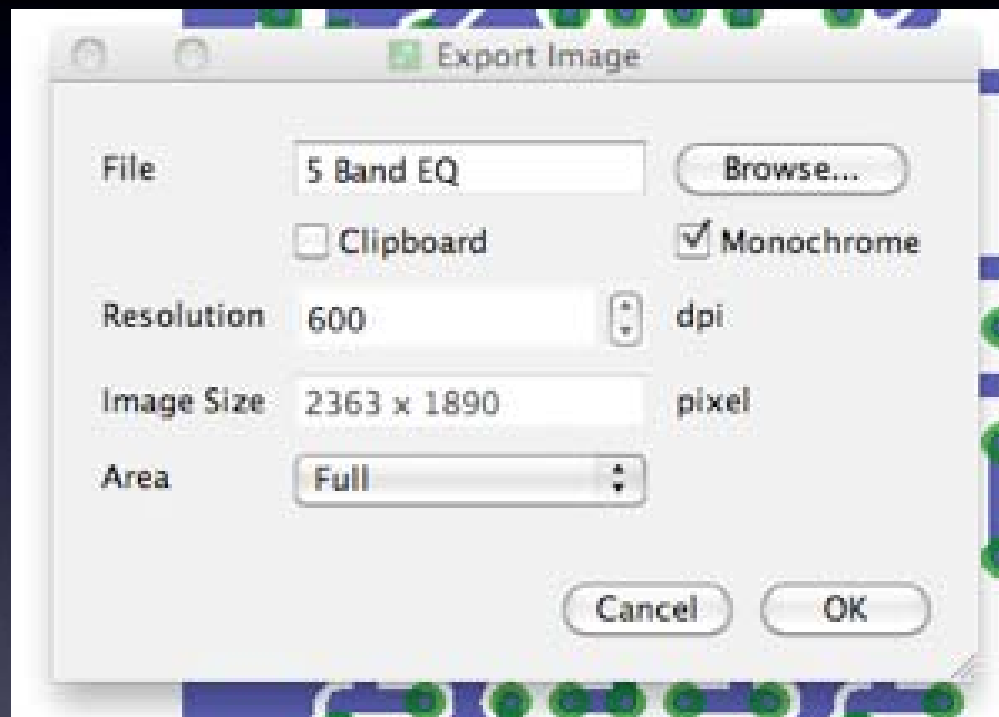
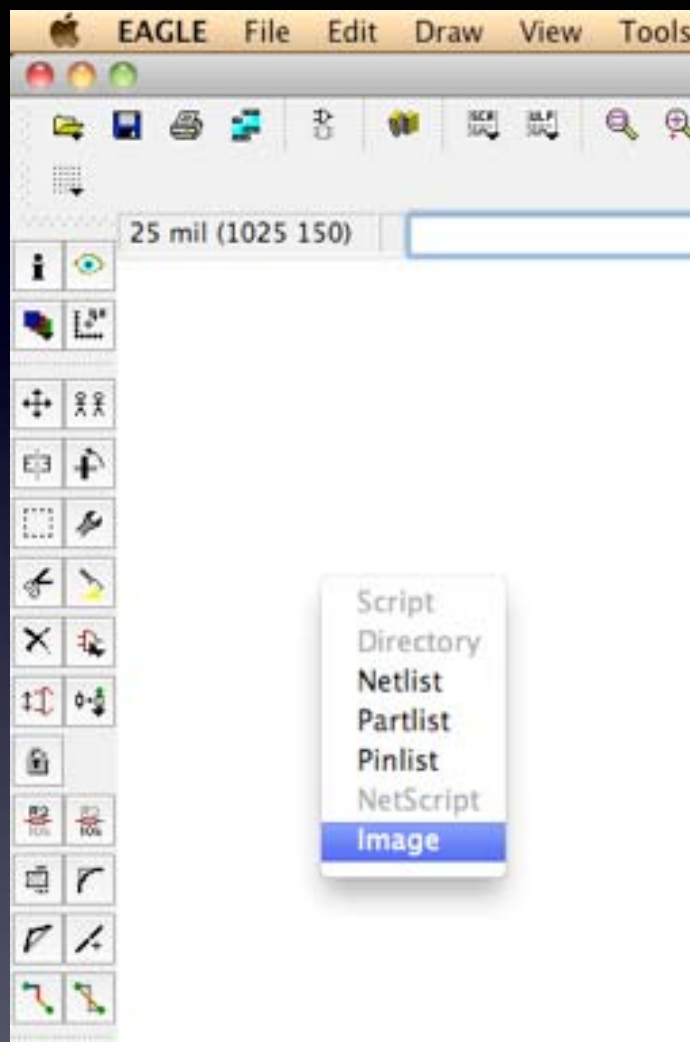


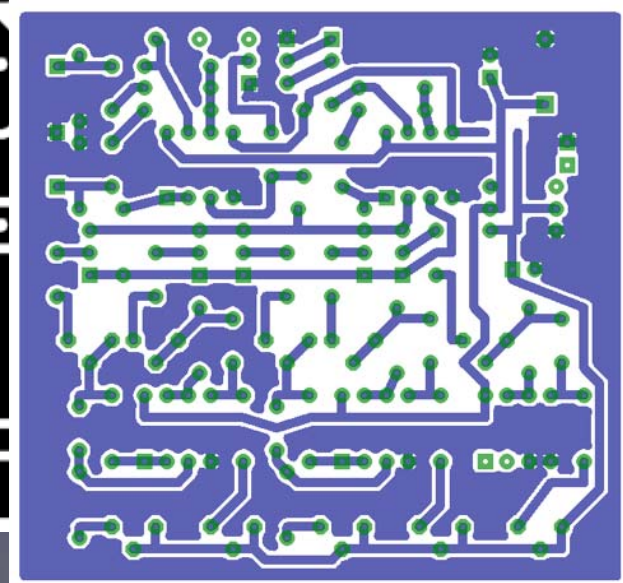
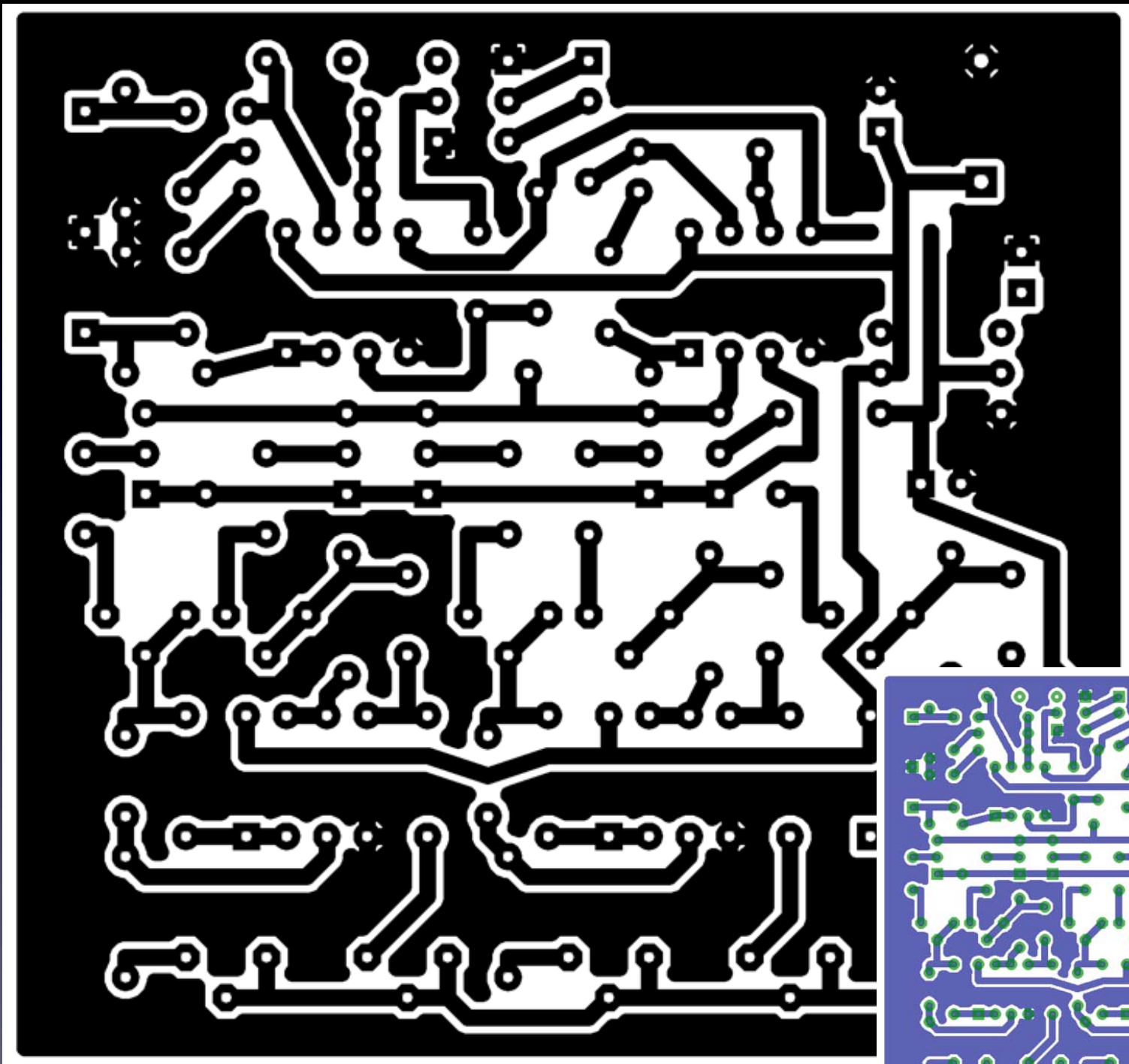


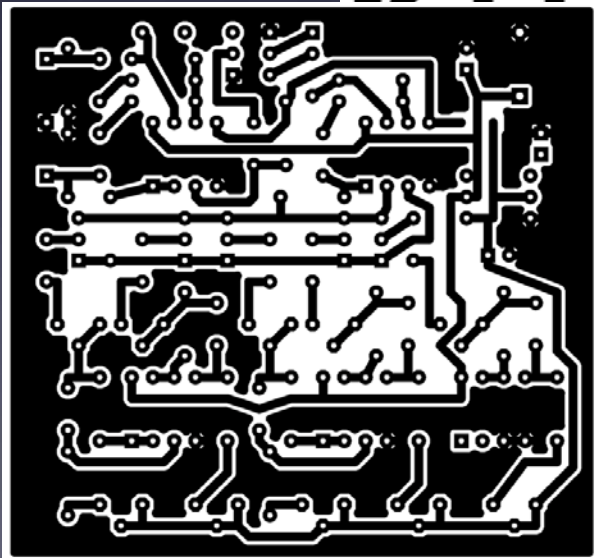
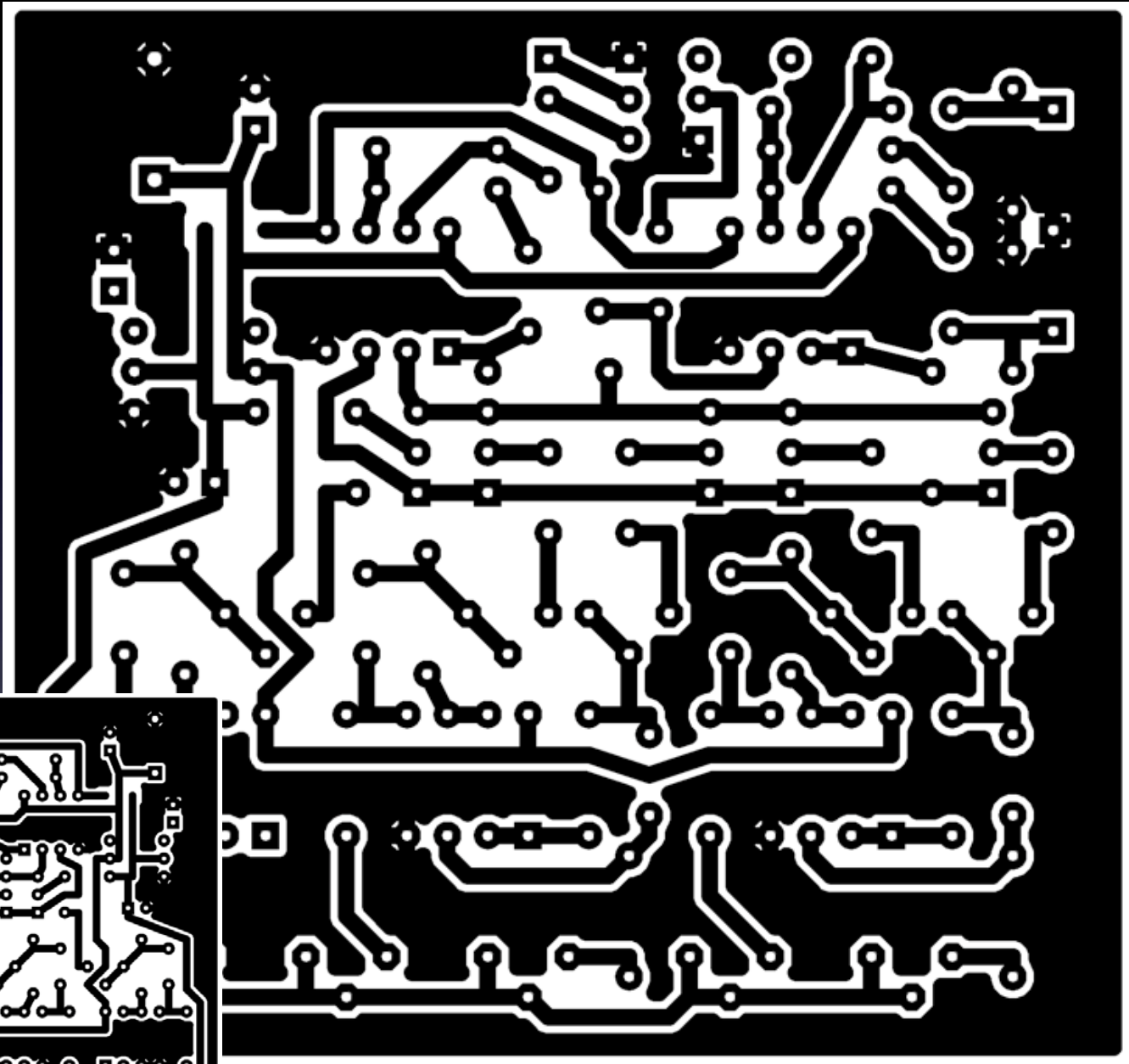






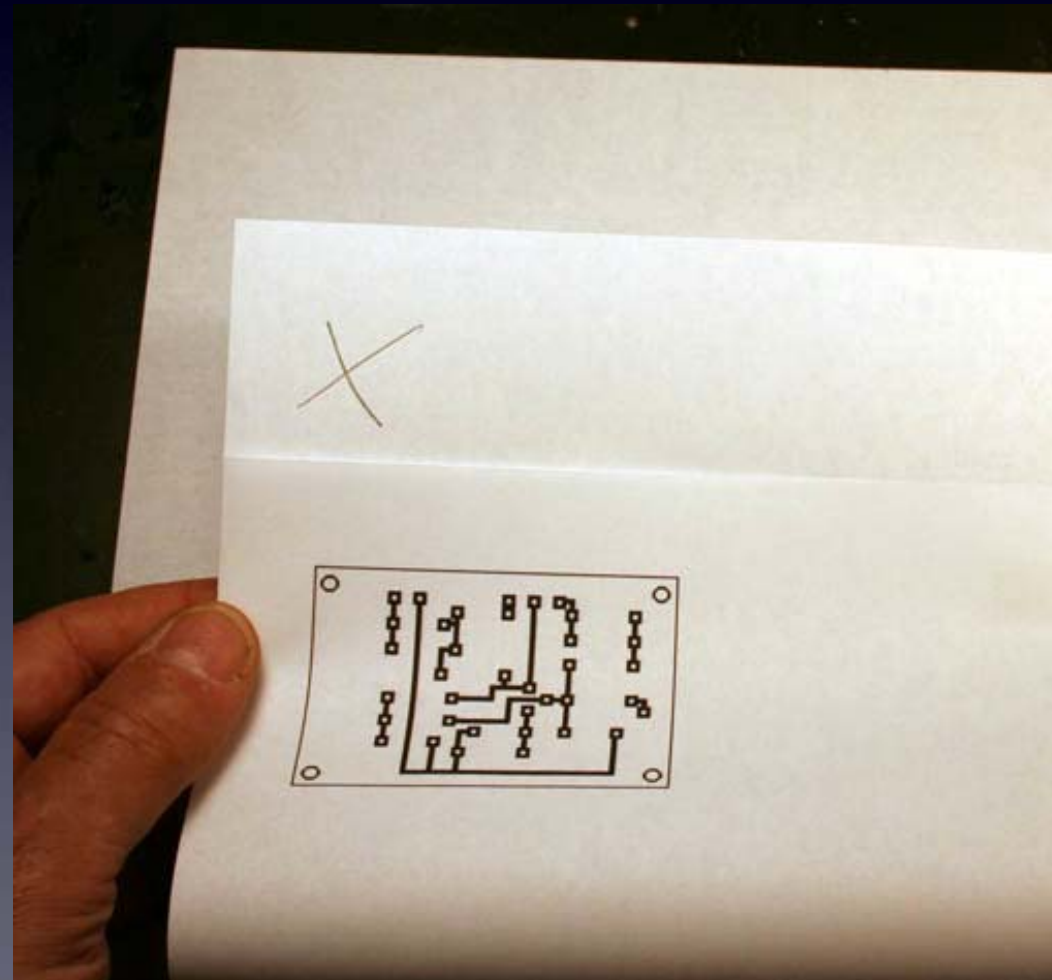
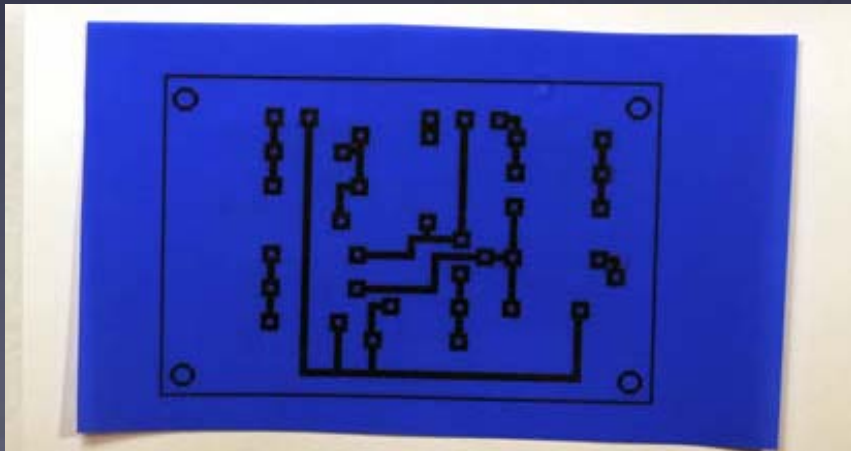






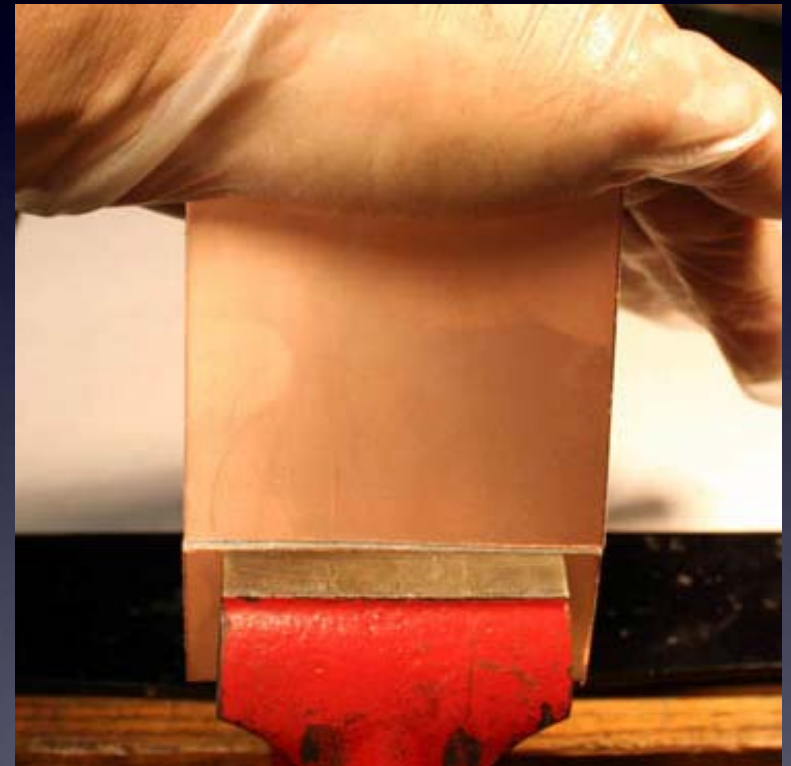
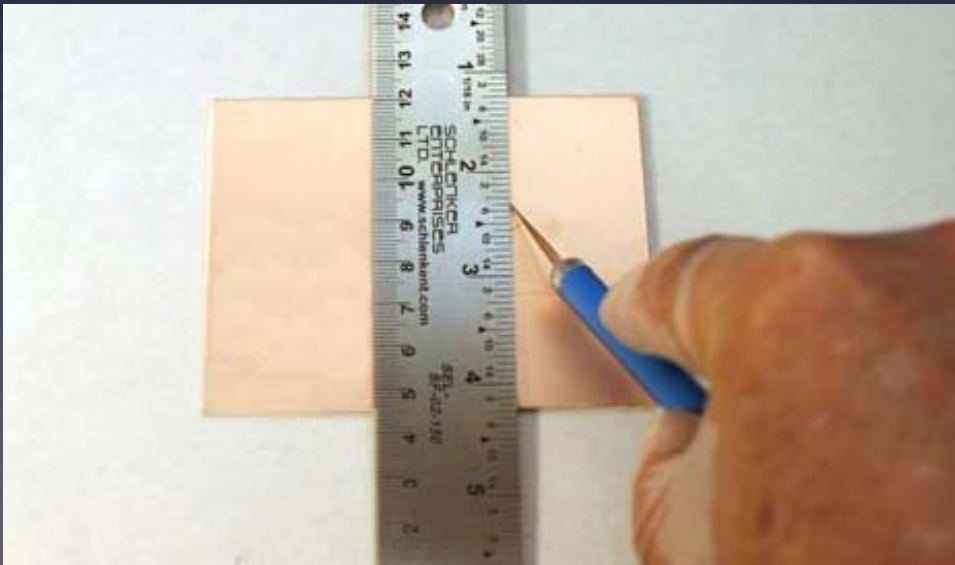
Printing the Transfer

- Techniks Press n Peel Blue
- Laser Printer ONLY
- Print Twice



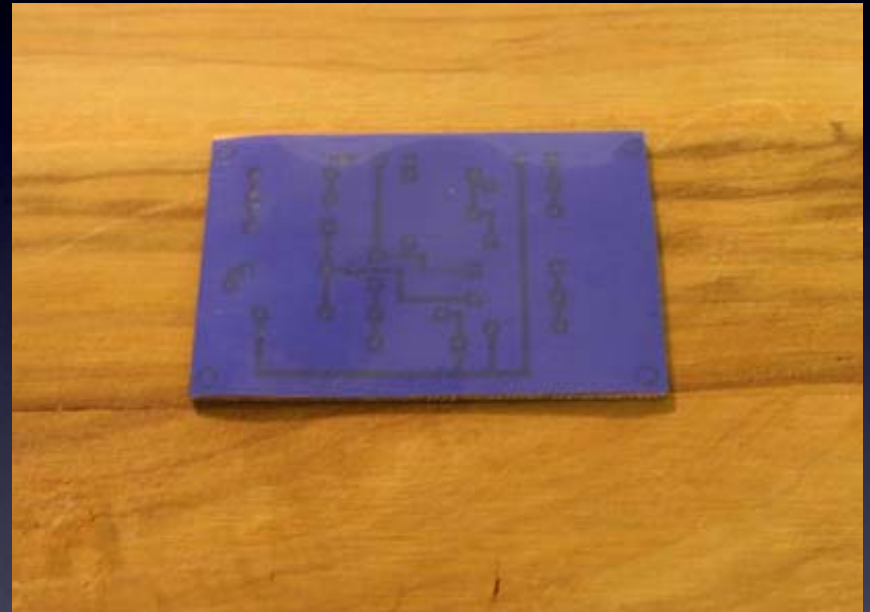
Trimming Board

- Score and Snap
- Saw/Dremel
- Fiberglass!



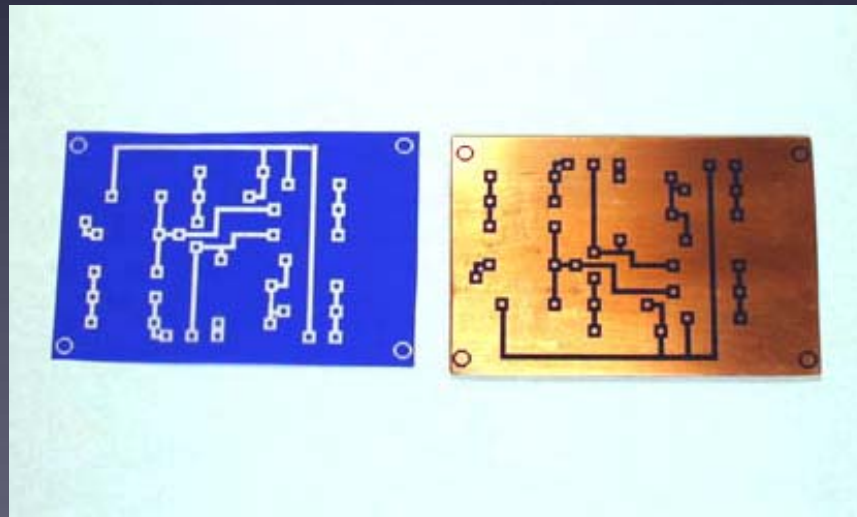
Ironing

- Copper Clad FR-4
- Single Sided
- Polyester Setting
- Preheat Board
- Be Patient

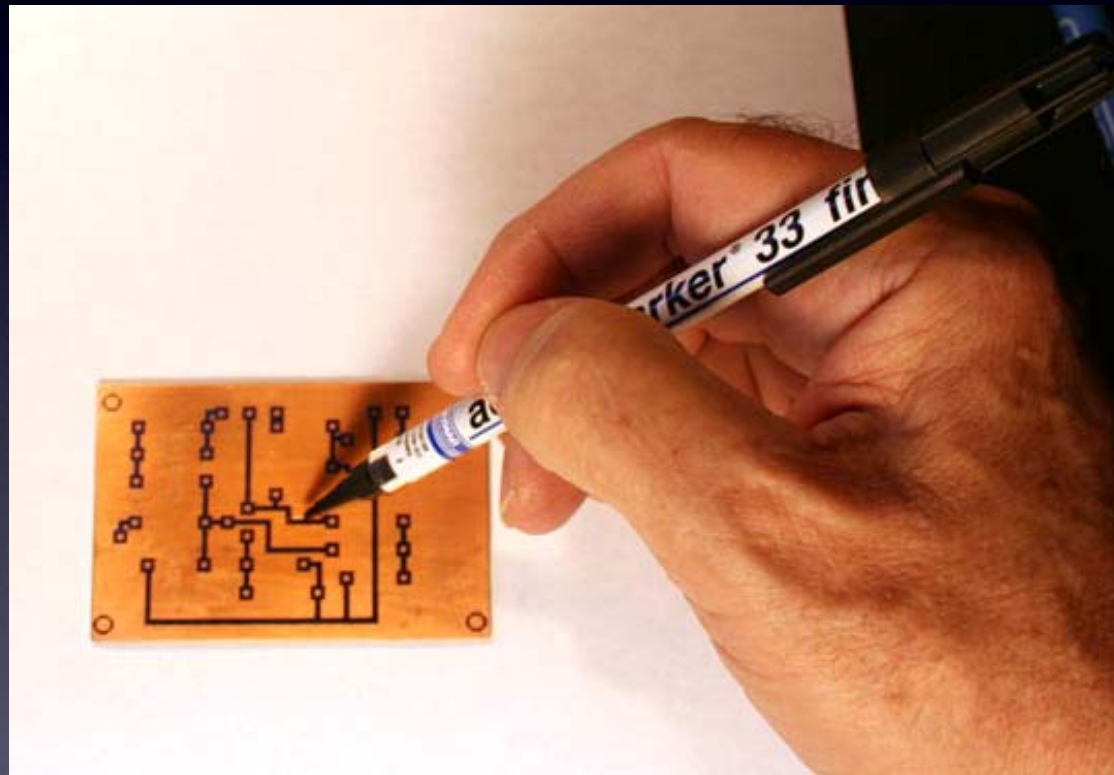


Removal

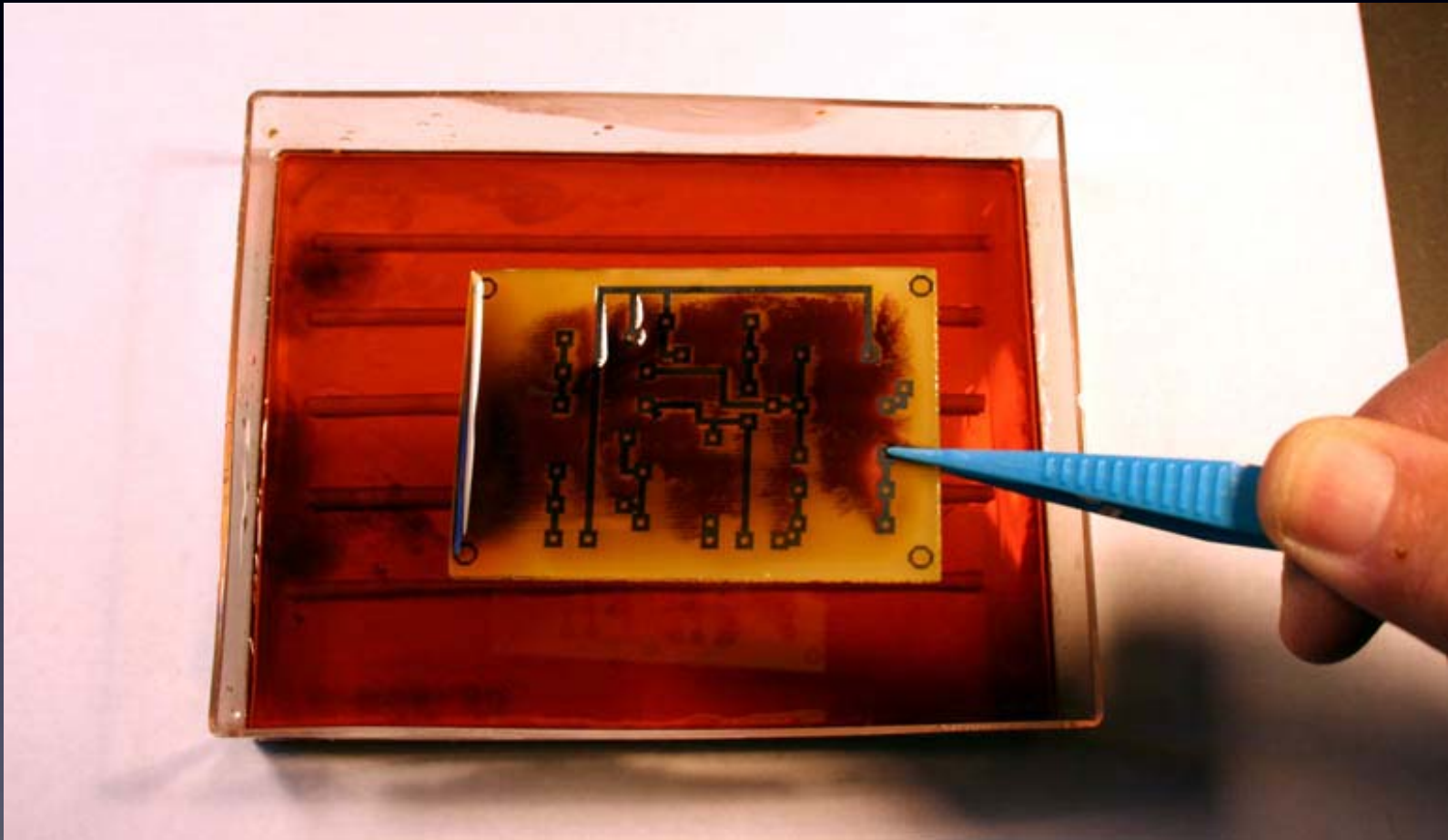
- Quench under running water
- Carefully lift from one corner



Quick Fixes

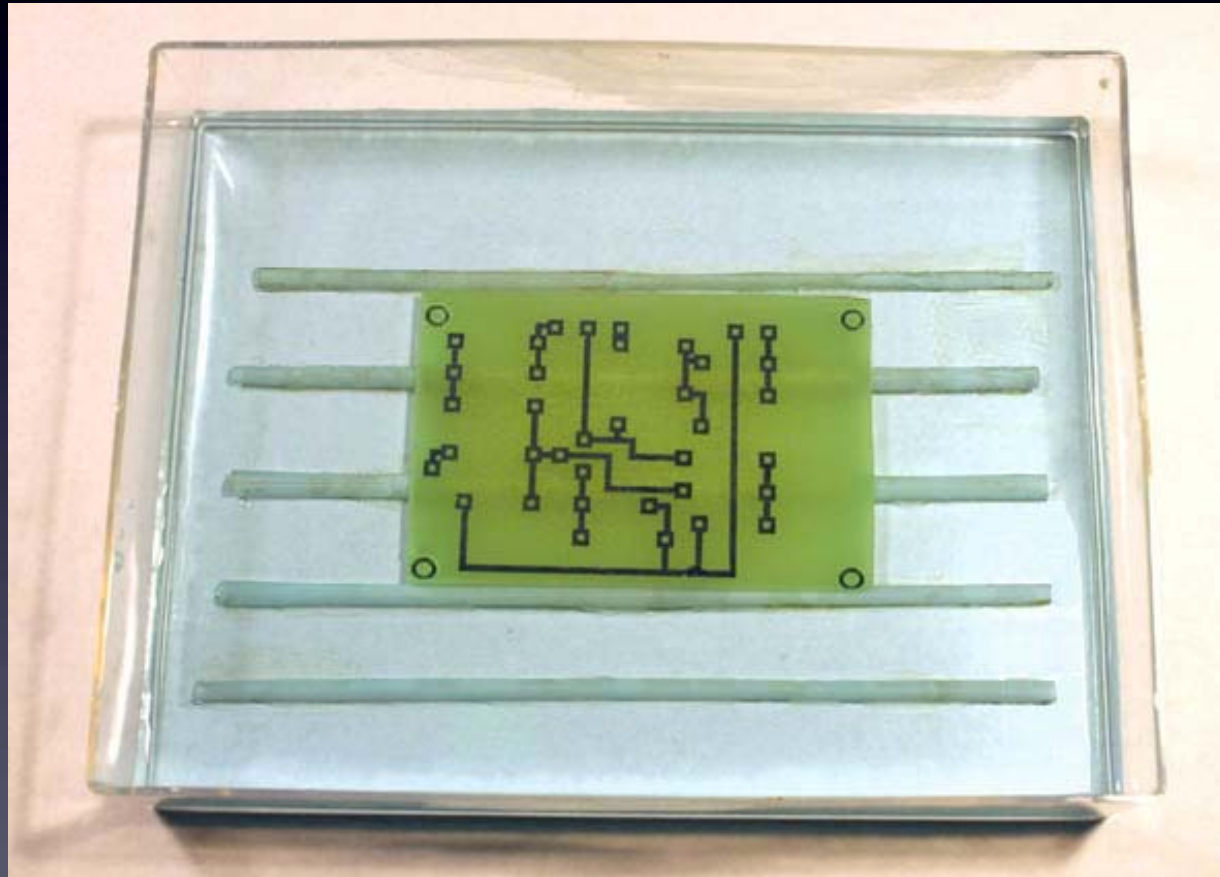


Etching



Ferric Chloride

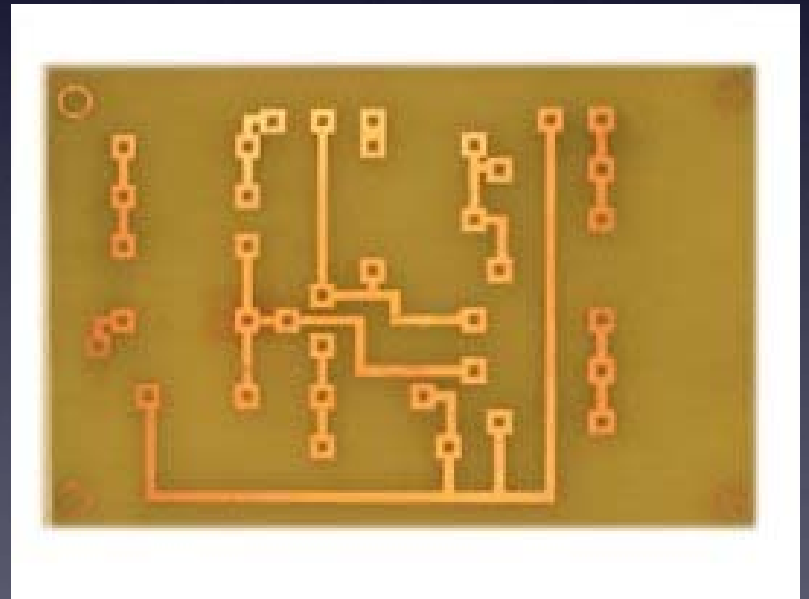
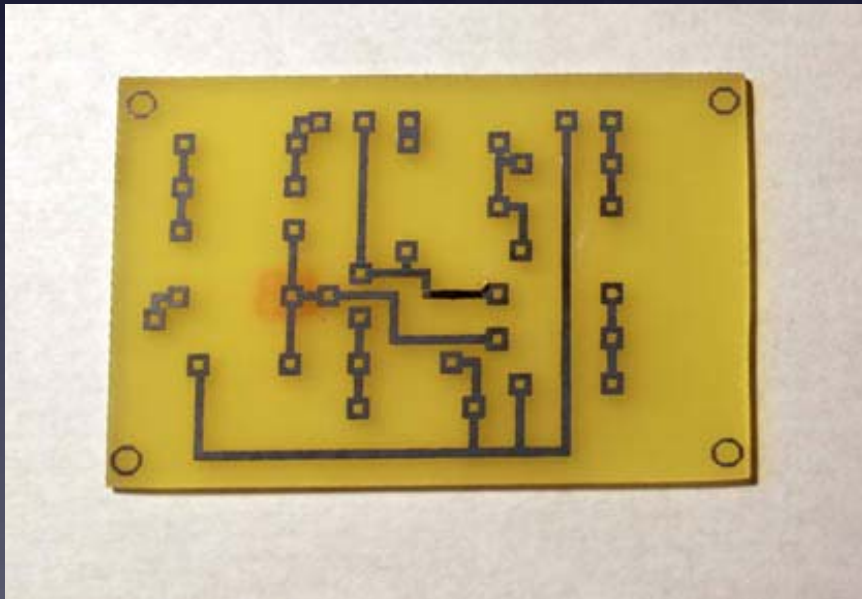
Etching



Sodium Persulfate

Clean Up

- Sand away Resist
- Strip with Acetone



Drilling

- “Wire Gauge” Drills
- No. 59 or 60
- Drill Press
- Much Faster than Drilling Metal
- Fiber Glass Precaution



The End

<http://www.smallbearelec.com/HowTos/DirectPCBoards/DirectPCBoards.htm>

